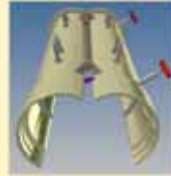




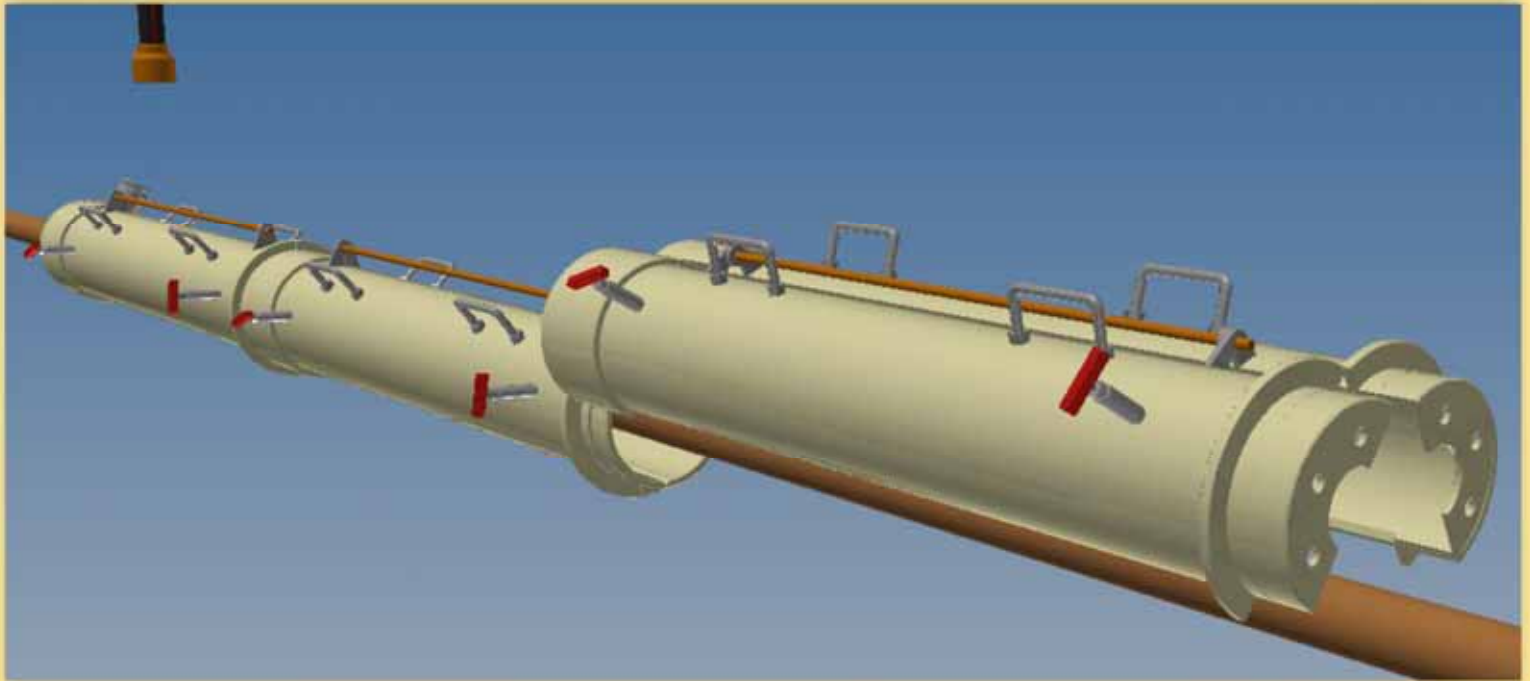
SUBSEA  
SYSTEMS

DIV. BAUGH CONSULTING ENGINEERS, INC.



SSTOM 2D

RAPID SUBSEA PIPELINE REMEDIATION  
WILL SOFTEN WAX OR MELT HYDRATES  
EASY TO INSTALL — LENGTH IS FLEXIBLE  
PERMANENT PROTECTION



STARTER SECTION HAS ONE END BLOCKED AROUND PIPE AND CONNECTION FITTING FOR HOT WATER HOSE (SHOWN APPROACHING WITH A MANUAL CONNECTOR)

MIDDLE SECTIONS ARE OPEN AT EACH END

END SECTION HAS A PIPE SIZE BULKHEAD WITH SOME CIRCULATION HOLES

CAN BE DIVER OPERATED WITH SURFACE HEATED WATER (AS SHOWN) OR ROV OPERATED WITH LOCAL HEAT GENERATION.

PRIMARY PVC CONSTRUCTION  
LIGHTWEIGHT IN WATER

Beta Subsea Systems offers a combination of patent licensing, engineering, manufacturing capabilities, and products to assist you grow your business.

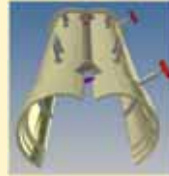
Primary Contacts: Benton F. Baugh, Ph.D., P.E., 713-419-8683, [bbaugh@baughengrs.com](mailto:bbaugh@baughengrs.com)  
James R. Crawford, 337-344-0289, [jimbobcrawford@gmail.com](mailto:jimbobcrawford@gmail.com)

PATENTS & PATENT PENDING

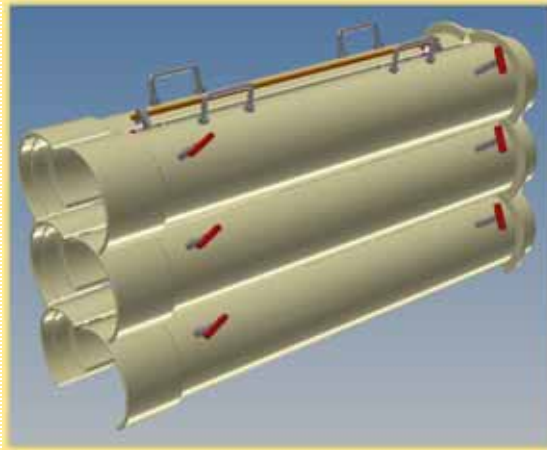


SUBSEA SYSTEMS

DIV. BAUGH CONSULTING ENGINEERS, INC.

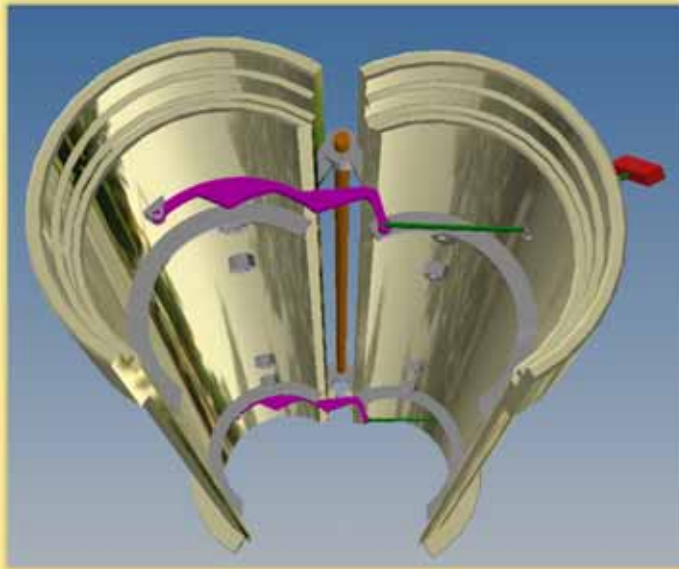


SSTOM 2D

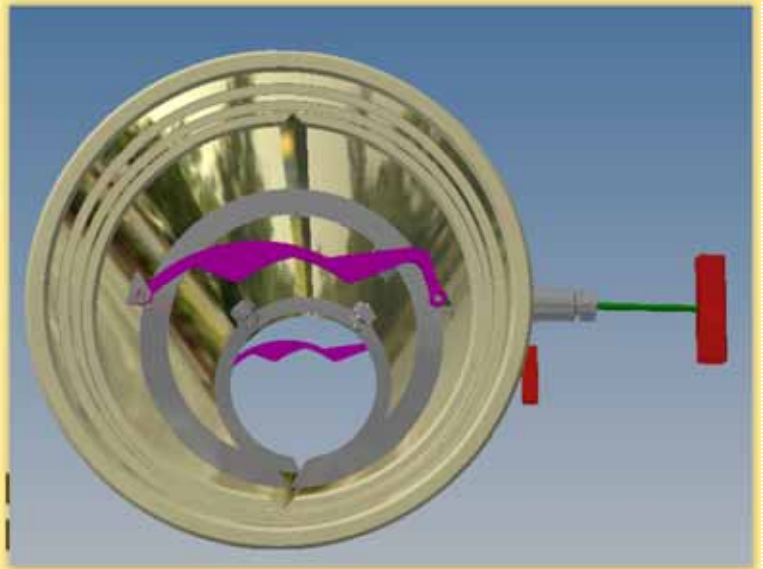


SECTIONS ARE STACKABLE FOR EASY DEPLOYMENT

SSTOM IS PRACTICAL TO LEAVE IN PLACE WHEN YOU HAVE A REMEDIATION, SO THE NEXT TIME ALL YOU HAVE TO DO IS BRING THE HOT WATER.



MAGENTA CLIP HOLDS HALVES APART FOR DELIVERY. PULLING THE RED HANDLES/GREEN ROPE RELEASES THE HALVES TO LOCK AROUND THE PIPE.



CONTINUED PULLING ON THE RED HANDLE PULLS THE HALVES TOGETHER AND INTERNAL SLIPS LOCK ON THE GREEN ROPE TO HOLD THEM TOGETHER. BASICALLY A DROP AND PULL

Beta Subsea Systems offers a combination of patent licensing, engineering, manufacturing capabilities, and products to assist you grow your business.

Primary Contacts: Benton F. Baugh, Ph.D., P.E., 713-419-8683, bbaugh@baughengrs.com  
James R. Crawford, 337-344-0289, jimbofcrawford@gmail.com

PATENTS & PATENT PENDING