



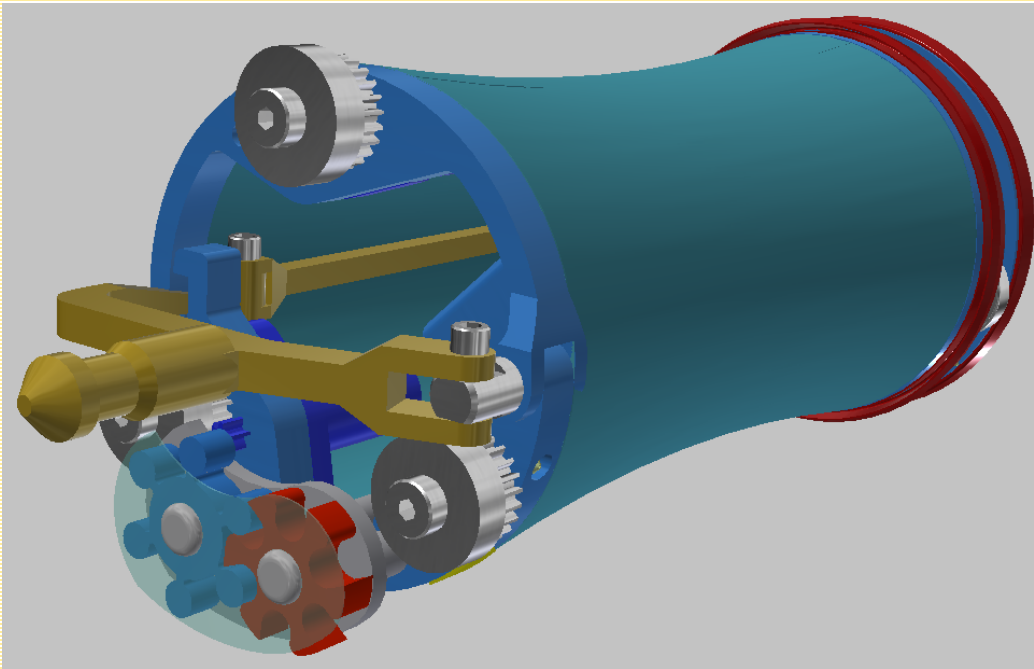
**SUBSEA
SYSTEMS**

DIV. BAUGH CONSULTING ENGINEERS, INC.

FERAL PIG

BFP-1

PIPELINE CLEANING WHILE PRODUCTION IS FLOWING!



**FREE RUNNING IN YOUR
PIPELINE**

**IMPELLER TAKES
POWER FROM PIPELINE
FLOW**

**SPIRALS FORWARDS
AND BACKWARDS IN
YOUR PIPELINE**

**CLEANS BY CUTTING,
JETTING, AND/OR BY
HEATING**

**FORMS CUTTINGS INTO
BALLS AND RELEASES
THEM INTO THE FLOW**

6" WILL PASS 5D BENDS

**THE BETA SUBSEA SYSTEMS FERAL PIG IS DESIGNED FOR
CLEANING FLOWING PIPELINES WHICH:**

ARE TOO LONG FOR COILED TUBING TO REACH

NEED TO BE CLEANED WITHOUT STOPPING THE FLOW

**NEED TO BE CONTINUALLY CLEANED BETWEEN TWO TRIP POINTS WITHOUT
OPERATOR ACTIONS REQUIRED**

Beta Subsea Systems offers a combination of patent licensing, engineering, manufacturing capabilities, and products to assist you grow your business.

Primary Contacts: Benton F. Baugh, Ph.D., P.E., 713-419-8683, bbaugh@baughengrs.com
James R. Crawford, 337-344-0289, jimbob@crawfordtechnicalserv.com

PATENTED



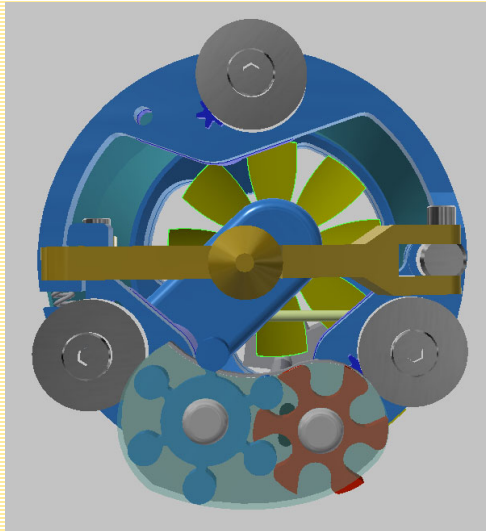
**SUBSEA
SYSTEMS**

DIV. BAUGH CONSULTING ENGINEERS, INC.

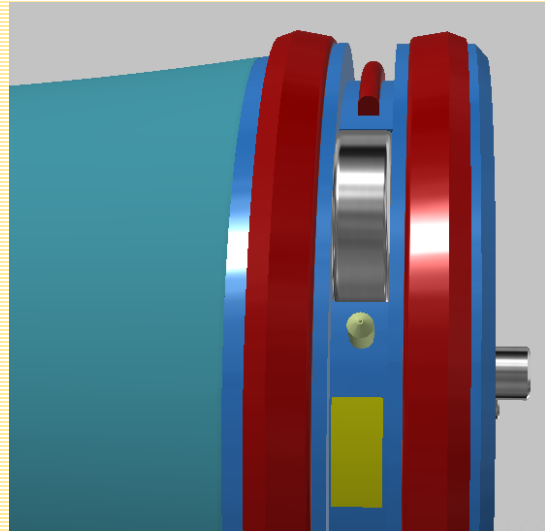
FERAL PIG

BFP-1

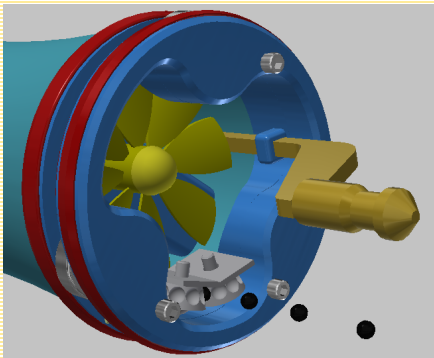
PIPELINE CLEANING WHILE PRODUCTION IS FLOWING!



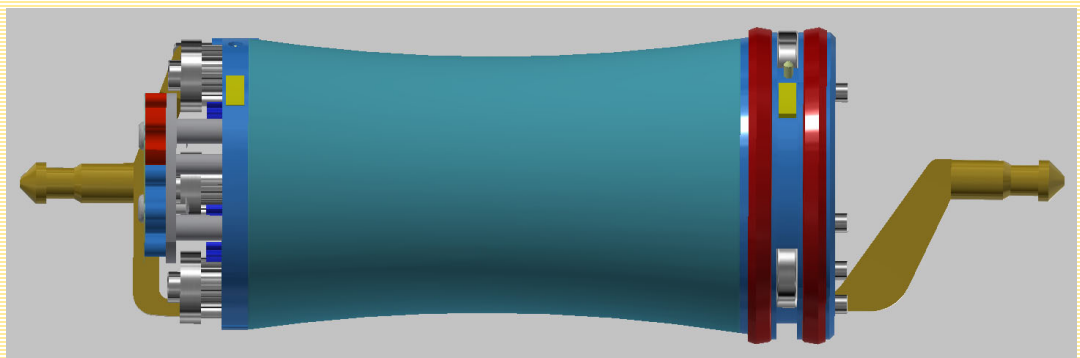
TUNGSTEN CARBIDE CUTTER (RED) REMOVES WAX AND THEN COMPRESSOR WHEEL (BLUE) PUSHES THE WAX INTO A TUBE TO THE "BALLER"



GROOVE PROVIDES JETTING AND HEATED FLUID TO MELT ANY RESIDUAL WAX FROM THE PIPELINE WALL



INTERNAL "BALLER" FORMS THE WAX INTO BALLS FOR RELEASE, AS THE LEAST LIKELY FORM TO RE-STICK TO A WALL



SPRING LOADED DRIVE WHEELS ARE SLIGHTLY ANGLED TO DRIVE PIG ON A SPIRALING PATH

PRIMARY RECOVERY IS AUTOMATIC. BETA LATCH PROFILE ON BOTH ENDS PROVIDE SECONDARY RECOVERY

Beta Subsea Systems offers a combination of patent licensing, engineering, manufacturing capabilities, and products to assist you grow your business.

Primary Contacts: Benton F. Baugh, Ph.D., P.E., 713-419-8683, bbaugh@baughengrs.com
James R. Crawford, 337-344-0289, jimbo@crawfordtechnicalserv.com

PATENTED